

FM 1363 tck P8

Mechanisms - meccanismi

			m/min	Kg	
Hoisting sollevamento S33-400 24Kw	▲ ▼		1	0 → 8.7	4000
			2	0 → 35	3000
			3	0 → 70	1500
		1	0 → 4.35	8000	
		2	0 → 17.5	6000	
		3	0 → 35	3000	

Hoisting sollevamento D50-400-900 37Kw	▲ ▼		1	0 → 3.5	4000
			2	0 → 15	4000
			3	0 → 30	3000
			4	0 → 60	2800
			5	0 → 90	1500
		1	0 → 1.75	8000	
		2	0 → 7.5	8000	
		3	0 → 15	6000	
		4	0 → 30	5600	
		5	0 → 45	3000	

Hoisting sollevamento VERT33 24Kw	▲ ▼		Kg 4000 3000 2000 1300			1300Kg
			0 25 35 50 70 m/min			

Hoisting sollevamento	▲ ▼		Kg 8000 6000 4000 2600			17.5
			12.5 25 35 m/min			

Trolleying Traslazione carrello	◀ ▶		1	10.5	8000	3.7 Kw
			2	42	6000	
			3	84	1500	

Slewing Rotazione			1	0 → 0.2	rpm	nr.2 motor 2.2Kw 4.4Kw
			2	0 → 0.5		
			3	0 → 0.7		

Travelling Traslazione	◀ ▶		1	0 → 5.5		3.7 Kw
			2	0 → 22		

Necessary electric power	S33-400 48 KVA	D50-400 62 KVA	VERT33-700 40 KVA	380V ± 5% 50Hz
--------------------------	-------------------	-------------------	----------------------	-------------------

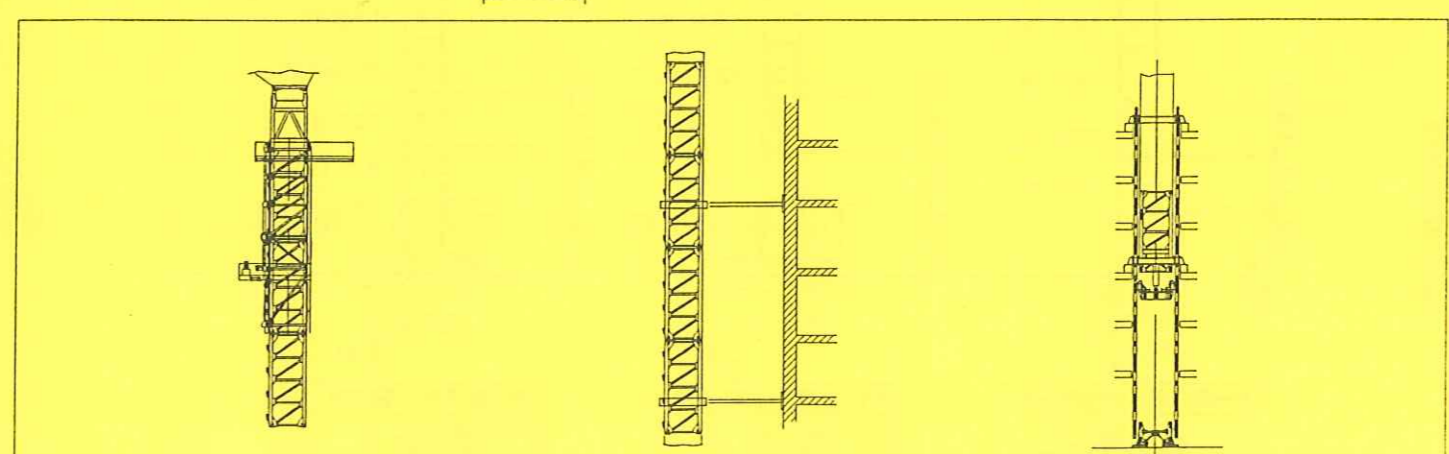
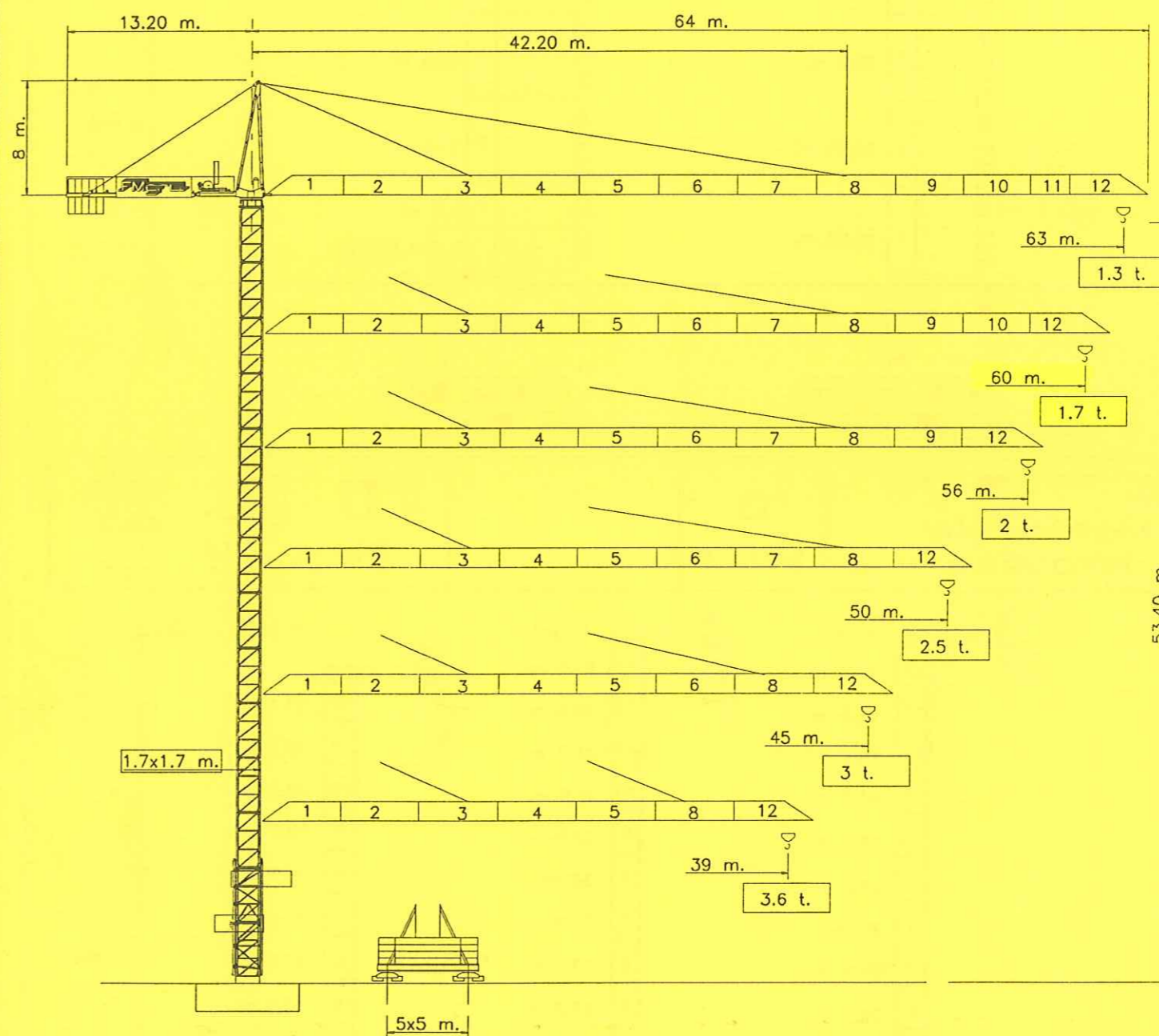
In compliance with the EEC 87/405 instruction on noise level

FMGRU
Fuochi Milanesi & C.
S.p.A.
via Emilia 11-29010 Pontenure PC ITALY
tel. 0523/510446 ric.aut.
fax 0523/510365

LANS. E' LA 17.60



FM 1363 tck P8

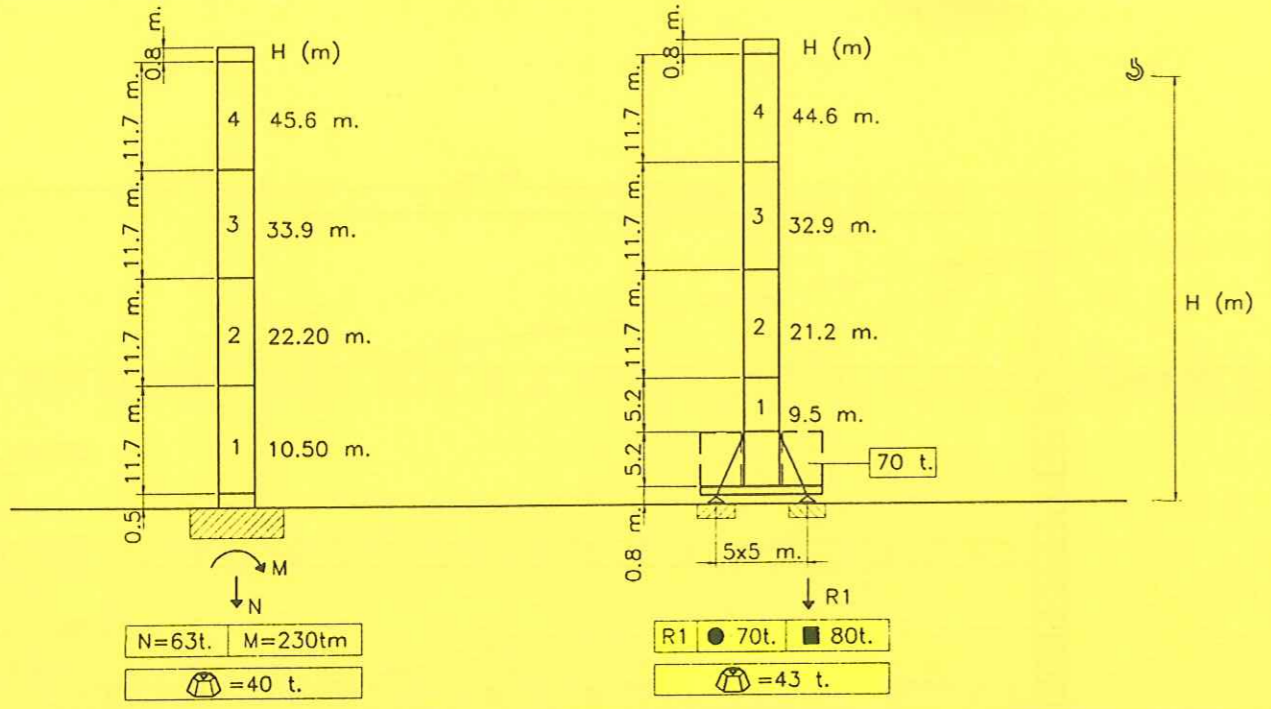


Torre - Masts - Mats - Maste
Möstil

City

1.7x1.7 m.

CL11.7 CL5.2 CL3.9

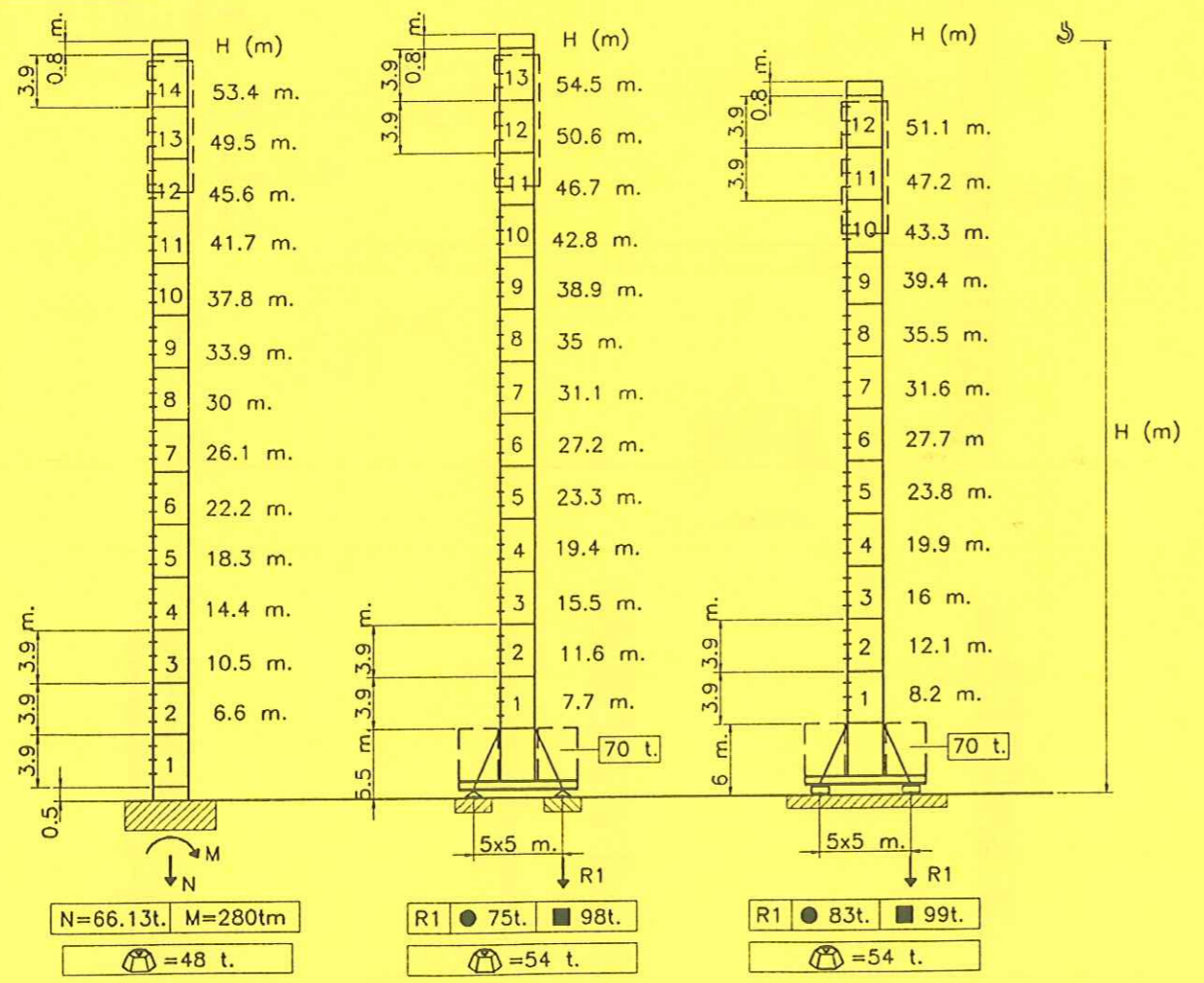


Torre - Masts - Mats - Maste
Möstil

Montaggio Idraulico

1.7x1.7 m.

TS3.9 TP3.9 T1.7



● = In servizio - In service - In Betrieb - En servicio
 ■ = Fuori servizio - Out of service - Ausser Betrieb
 Fuera de servicio

Braccio
Jib
Fläche
Ausleger
Flecha

Curve di carico - Load diagrams - Courbes de charges - Lastkurven - Curvas de cargas

63 m.	[Diagram]														[Diagram]																																		
	15.5	16	18	20	22	24	26	28	30	32	34	36	38	40	42	44	46	48	50	52	54	56	58	60	63	8	7	6.12	5.45	4.9	4.44	4.05	3.71	3.42	3.17	2.95	2.75	2.57	2.41	2.26	2.13	2.01	1.9	1.8	1.71	1.62	1.54	1.47	1.4
60 m.	[Diagram]														[Diagram]																																		
	16	18	20	22	24	26	28	30	32	34	36	38	40	42	44	46	48	50	52	54	56	58	60	8	7.8	6.36	5.72	5.19	4.75	4.36	4.03	3.74	3.48	3.25	3.05	2.86	2.70	2.55	2.41	2.28	2.17	2.06	1.96	1.87	1.78	1.7			
56 m.	[Diagram]														[Diagram]																																		
	18	20	22	24	26	28	30	32	34	36	38	40	42	44	46	48	50	52	54	56	8	7.50	6.77	6.15	5.64	5.19	4.81	4.47	4	3.73	3.51	3.30	3.03	2.87	2.67	2.54	2.40	2.30	2.13	2									
50 m.	[Diagram]														[Diagram]																																		
	20	22	24	26	28	30	32	34	36	38	40	42	44	46	48	50	8	7.26	6.60	6.06	5.58	5.17	4.81	4.50	4	3.68	3.47	3.22	3.05	2.81	2.67	2.5																	
45 m.	[Diagram]														[Diagram]																																		
	20	22	24	26	28	30	32	34	36	38	40	42	44	45	8	7.30	6.61	6.10	5.60	5.20	4.83	4.60	4	3.80	3.50	3.25	3.10	3																					
39 m.	[Diagram]														[Diagram]																																		
	20	22	24	26	28	30	32	34	36	38	39	8	7.40	6.62	6.20	5.80	5.60	5.10	4.90	4	3.8	3.6																											

